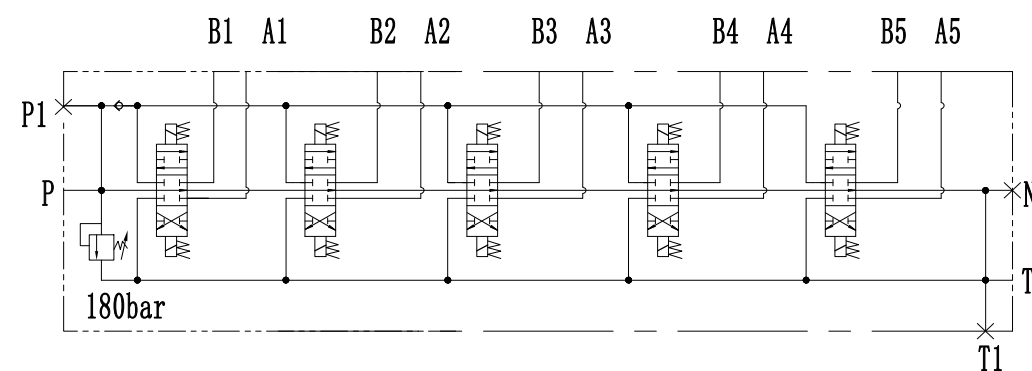


表-1

| 阀体 | |
|-------|------|
| 接口 | 螺纹规格 |
| P-P1 | G1/2 |
| T-T1 | G1/2 |
| A1-A5 | G3/8 |
| B1-B5 | G3/8 |
| N | G1/2 |

- Technical requirements
1. Model: P40DC-50T-18-24DL;
 2. Maximum flow rate: 40L/min, maximum operating pressure: 20MPa;
 3. Safety valve set pressure: 18±0.5MPa;
 4. Electromagnet parameters: Voltage: DC12V; Resistance (20°C): 4Q±5%; Interface: DIN43650;
 5. Oil port size see Table-1;
 6. Working conditions requirements:
 - (1) Hydraulic oil temperature: -20-80°C;
 - (2) Hydraulic oil cleanliness is not less than IS04406c1ass21/18/15;
 - (3) The return oil back pressure of the solenoid valve T port does not exceed 1MPa;
 7. P1, T1, N are sealed with metal screw plugs, and other oil ports are sealed with plastic screw plugs.
 8. Spray black paint on the surface of the parts.

液压原理图



| | | | | | | | | | |
|----|----|----|-------|----|-------|------|-----|--------------|-------------------|
| | | | | | | 外形图 | | 山东奥骏液压科技有限公司 | |
| | | | | | | | 版本号 | 类型 | 五联多路阀 |
| 标记 | 处数 | 分区 | 更改文件号 | 签名 | 年、月、日 | | | | |
| 设计 | | | 标准化 | | | 阶段标记 | 重量 | 比例 | |
| 校对 | | | | | | | | 1:2 | |
| 审核 | | | | | | | | | P40DC-50T-18-24DL |
| 工艺 | | | 批准 | | | 共 张 | 第 张 | | |