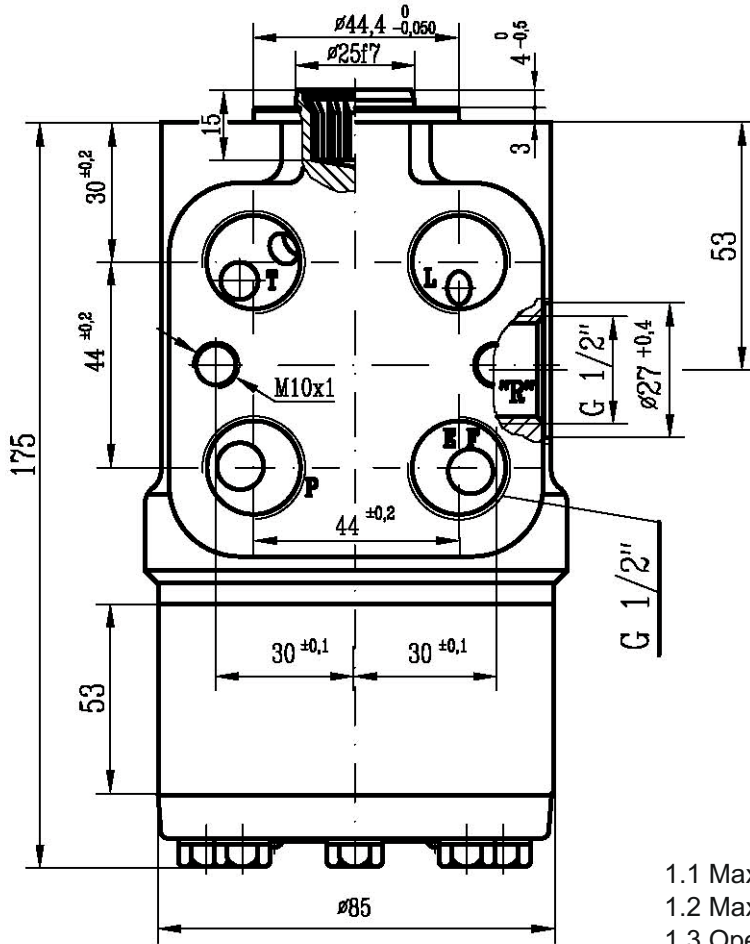
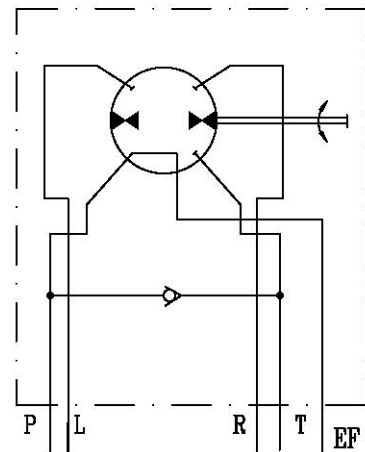


Hydrostatic Steering Unit type HKUSUB 400-S1



Hydraulic SCHEMATIC



1. Technical data

- 1.1 Max. Continuous Pressure P-R,L - 160 [bar]
- 1.2 Max. Continuous Pressure P-EF - 200 [bar]
- 1.3 Operating temperature range from -20°C to +80°C
- 1.4 Viscosity range - 10-100 [mm²/s]
- 1.5 Max. flow - 90 [l/min]

