

P80系列电磁控整体阀

P80 Solenoid Control Valve

用途与特征/APPLICATIONS&FEATURES

P80系列电磁控整体式多路阀是我公司引进欧洲的一种中高压、电磁阀控制的整体多路阀。该阀采用并联或者串联油路，设计有压力输出口与其他液压元件相连接提供动力源。经过特殊设计的密封方式，使阀的密封性能卓越。该阀广泛应用于叉车、环卫车辆、小型装载机工程机械的液压系统。



P80 series valves with middle-high pressure monoblock construction is developed based on Europe technology.

◆ The monoblock directional control valves-solenoid operated, offer perfect choice whether you are designing a new system or just simply trying to get more out of your current system. With two special spools and 6 different monoblock housings these valves can meet the specific needs of your application and hydraulic schemes by their double acting in 3 positions A and D spools.

◆ Inner check valve: The check valve inside the valve body is to insure the hydraulic oil not to be returned.

◆ Inner relief valve: The relief valve inside the valve body is able to adjust the hydraulic system working pressure.

◆ Oil way: Parallel circuit, power beyond option

◆ Coils, Connector ISO4400: 12VDC, 24VDC

◆ Threads:P,A,B-G1/2, SAE10, T-G3/4,SAE12

◆ Valve construction: Monoblock construction, 1-6 levers.

Precise bore honing and spool grinding results in less cross-port leakage and less wasted energy. These precise valves also allow for interchangeable spools for easy on place maintainance.

型号说明/MODEL CODE

P80 / (20) O 12VDC G

油口尺寸/Port Size code G: PAB-G1/2, TN-G3/8
电控电压Voltage:DC12V, DC24V
阀杆机能(Spool Function): O:Cylinder Spool, A:Single Acting Spool on A port, Y: Motor Spool
公称压力/Nom.pressure (MPa) : 16,20,25,31,5
多路换向阀代号/Monoblock Directional Control Valve

技术参数/PARAMETERS

公称压力 (MPa) Nom. Pressure	最大压力 (MPa) Max. Pressure	公称流量 (L/min) Nom. Flow rate	最大流量 (L/min) Max. Flow rate	中位背压 (MPa) Back Pressure	工作油液hydraulic oil		
					温度范围 (°C) Tem.rang	粘度范围 (mm2/S) Visc.rang	过滤精度 (μm) filtrating accuracy
20	31	80	80	≤1	-20 ~ +80	10 ~ 400	≤10

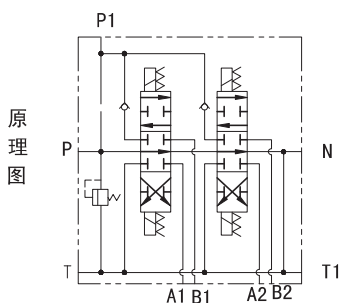
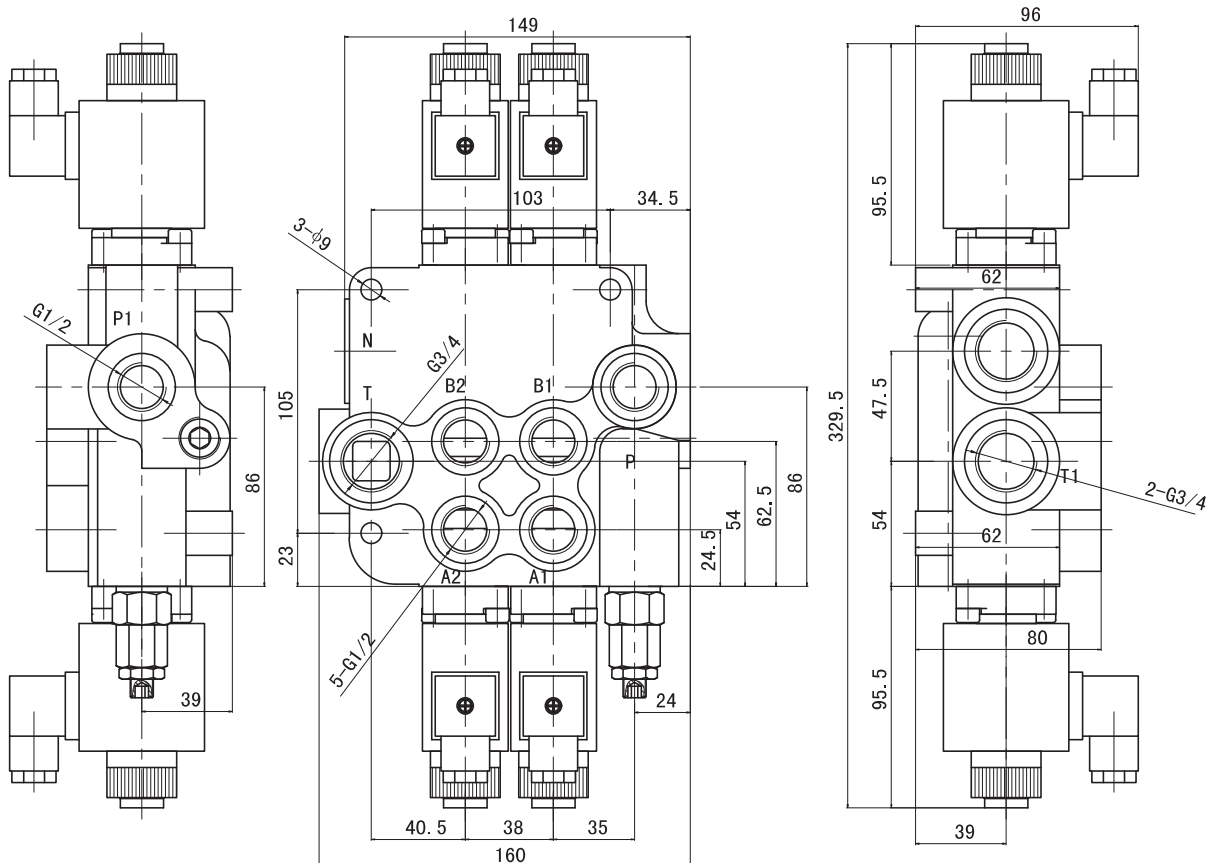
a9

P80系列电磁控整体阀MDCV

P80系列电磁控整体阀

P80 Solenoid Control Valve

P80外形安装连接尺寸/MODELR P80 DIMENSIONAL DATA



技术参数:
1. 公称压力 20MPa
3. 额定流量 80L/min

注: 订货有特殊要求者, 请与销售顾问联系。
Note: Special features not listed can often be made to your specifications. Please consult your sales representative.